

INSTALLATION GUIDE

BDP53CC11

BALLISTIC DOOR PANEL

2013 - CURRENT

CHEVY CAPRICE

Pro-gard[™]
PRODUCTS LLC.

STRONG | RELIABLE | SECURE

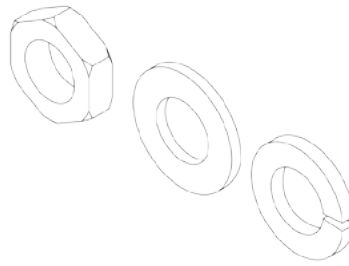
pro-gard.com
800.480.6680

Ballistic Door Panel Installation Manual

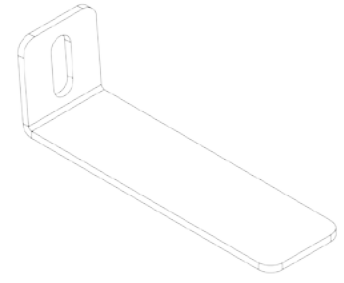
Vehicle: Chevrolet Caprice NIJ Level IIIA



Door Panel



Hardware



Bracket

- 1 Remove door trim and molding, ensuring all required electrical systems are disconnected from the door insert.



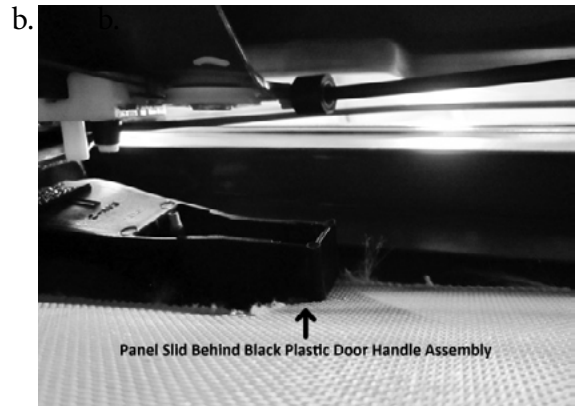
- 2 Install panel through window opening at the top of the door. Installed panel should be in between the glass and outer door shell.



Ballistic Door Panel *Installation Manual*

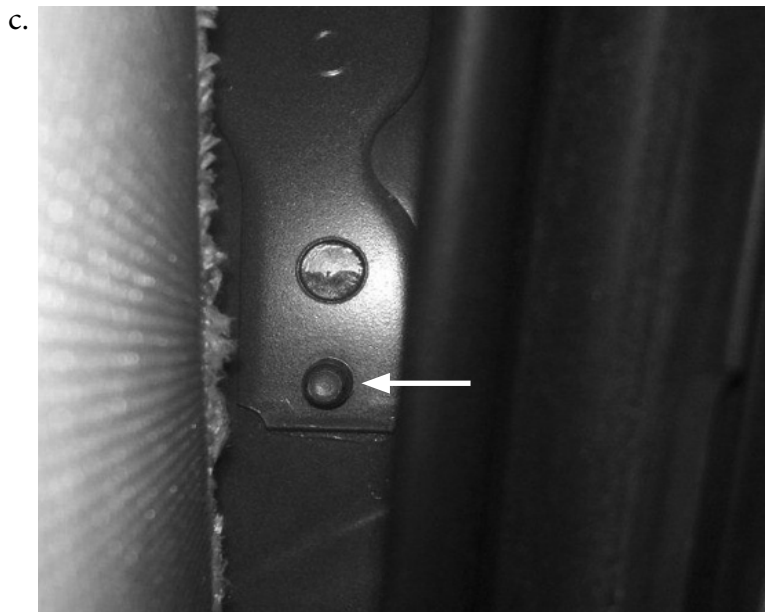
Vehicle: Chevrolet Caprice NIJ Level IIIA

- 3 Slide panel back behind exterior door handle mech. Panel must be slid behind exterior factory door handle assembly (Black Plastic Casing).



← Direction to Slide Panel.

Bracket to be installed on to lower stud of upper door hinge. Install provided bracket & ensure panel isn't loose.



- 4 Reinstall window track and window & test window movement up and down.

- 5 Reinstall Door Panel.