

# **INSTALLATION GUIDE**

**LEVEL III BALLISTIC DOOR PANEL**

**BDP36INT13-III**

**2013 - CURRENT**

**FORD POLICE INTERCEPTOR**

**Pro-gard**<sup>™</sup>  
PRODUCTS LLC.

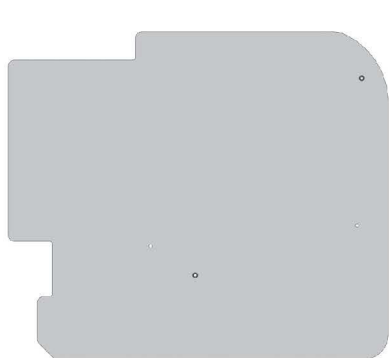
**STRONG | RELIABLE | SECURE**

**pro-gard.com**  
**800.480.6680**



# Ballistic Door Panel *Installation Manual*

Vehicle: Ford Interceptor Sedan - NIJ Level III

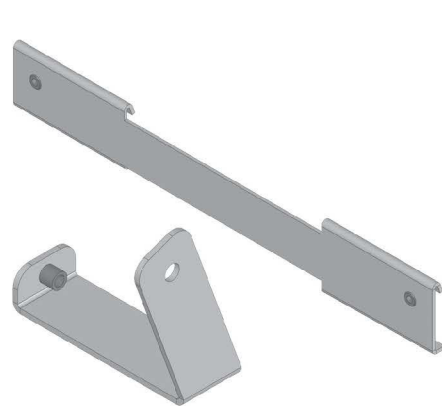


REAR → FRONT

Door Panel



Hardware



Brackets

- 1 Remove door trim and molding, ensuring all required electrical systems are disconnected from the door insert.



- 2 Install long bracket and slide the panel through the window opening at the top of the door.

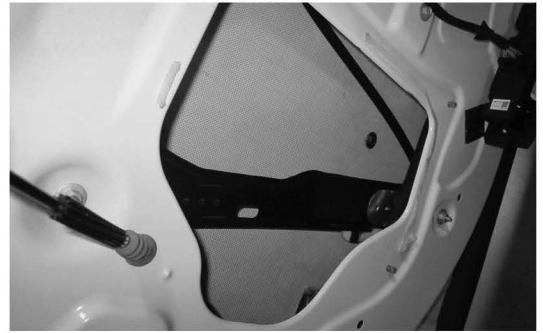
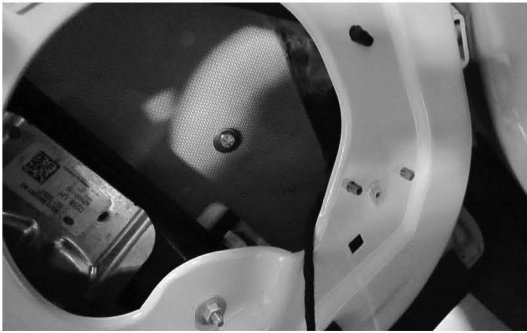




# Ballistic Door Panel *Installation Manual*

Vehicle: Ford Interceptor NIJ Level III

- 3** Mount the panel using the provided hardware.



- 4** Install the U bracket and spacer tube using the factory holes.



- 5** Reinstall window track and window & test window movement up and down.

- 6** Reinstall Door Panel.