

INSTALLATION GUIDE

LEVEL IIIA BALLISTIC DOOR PANEL

BDP36INT13-III A

2013 - CURRENT

FORD POLICE INTERCEPTOR

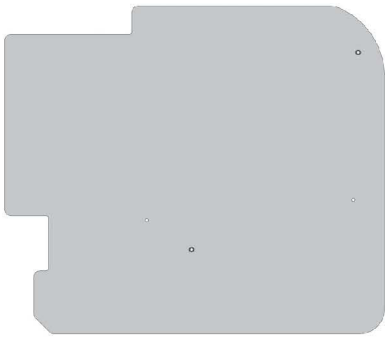
Pro-gard[™]
PRODUCTS LLC.

STRONG | RELIABLE | SECURE

pro-gard.com
800.480.6680

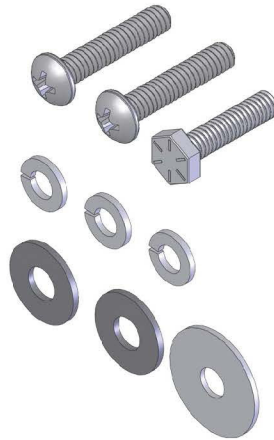
Ballistic Door Panel *Installation Manual*

Vehicle: Ford Interceptor Sedan - NIJ Level IIIA

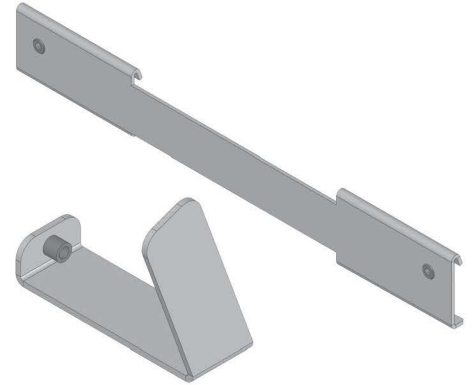


REAR FRONT

Door Panel



Hardware



Brackets

- 1 Remove door trim and molding, ensuring all required electrical systems are disconnected from the door insert.



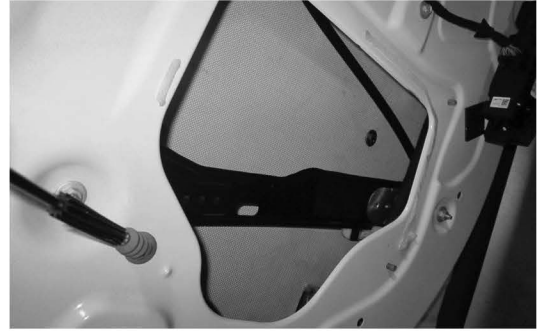
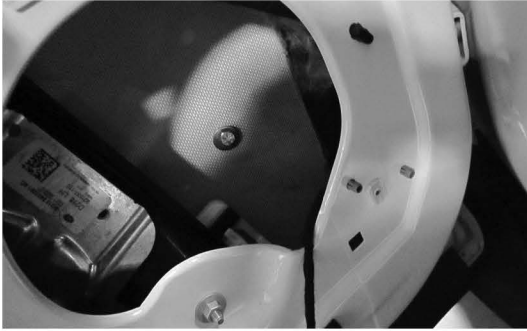
- 2 Install long bracket and slide the panel through the window opening at the top of the door.



Ballistic Door Panel *Installation Manual*

Vehicle: Ford Interceptor NIJ Level IIIA

- 3** Mount the panel using the provided hardware.



- 4** Install the U bracket using the factory holes.



- 5** Reinstall window track and window & test window movement up and down.

- 6** Reinstall Door Panel.