



PRODUCT CATALOG

Pro-gard[™]
PRODUCTS LLC.

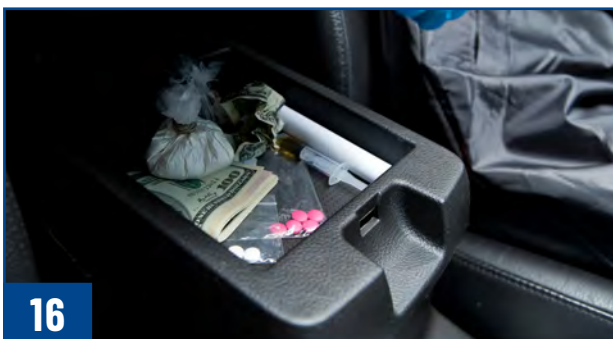


P1300 PRO-CELL - 1/3 CAGE, SINGLE PRISONER TRANSPORT SYSTEM

Our new P1300 Pro-Cell for the 2020- Current Ford Interceptor Utility offers the same high level of containment as our other Pro-Cells. It safely confines the prisoner to only 1/3 of the area behind the passenger seat allowing for full use of the other 2/3 OEM seats behind the driver. The P1300's versatile design allows full functionality of the driver's seat along with the convenience of maintaining the use of space behind the officer without removing the entire OEM second-row seats.



Our patented Pro-cell Prisoner Containment Systems are the solution for fleets that need to achieve total prisoner containment during transports. For officer safety and convenience, we offer the latest designs for single or dual prisoner transports in Sedans, SUVs and Pickup Trucks. Economically friendly, each of our four Pro-cell styles comes with everything needed to provide fully contained prisoner transport systems.



CONTENTS

PRISONER TRANSPORT 1-6

PRO-CELL PRISONER CONTAINMENT SYSTEMS	1-2
PARTITIONS	3-4
WINDOW ARMOR AND ABS DOOR PANELS	5
TRANSPORT SEATS AND FLOOR PANS	5
CARGO BARRIERS	6
PRISONER TRANSPORT LIGHTING	6

GUN RACKS 7-10

TRI-LOCK VERTICAL PARTITION MOUNT GUN RACK	7
PRO-CELL VERTICAL PARTITION MOUNT GUN RACK	8
UNIVERSAL PARTITION MOUNT GUN RACK	8
TRI-LOCK SELF-SUPPORTING GUN RACK	9
TRUNK MOUNT GUN RACK	10
MOTORCYCLE MOUNT GUN RACK	10
SINGLE VERTICAL MOUNT GUN RACK	10

ORGANIZATION AND STORAGE 11-12

TRUNK AND CARGO AREA ORGANIZERS	11
SEAT ORGANIZERS	11
TRUNK AND ELECTRONIC TRAYS	11
CARGO SECURITY COVER	12
WEAPON AND STORAGE DRAWERS	12

EXTERIOR VEHICLE PROTECTION 13-14

HD PUSH BUMPERS	13
COMMAND GRILLE®	13
REAR WINDOW GUARDS	14
BALLISTIC DOOR PANELS	14
SKID PLATES	14

ELECTRONIC VEHICLE PROTECTION 15

AOI ELECTRICAL AIR BAG CONTROL SWITCHES	15
SAFESTOP® VEHICLE ANTI-THEFT SYSTEM	15

FORENSICS 16

DTK™ PRODUCTS	16
---------------	----

PRO-CELL PRISONER TRANSPORT SYSTEMS

P1000

1/2 CAGE, SINGLE PRISONER TRANSPORT SYSTEM



The **P1000** Half Cage offers a greater level of containment than standard partitioned vehicles by restricting the prisoner to only half of the back seat. This half Pro-cell partition's versatile design allows full functionality of the driver's seat along with the convenience of additional storage space behind the driver.

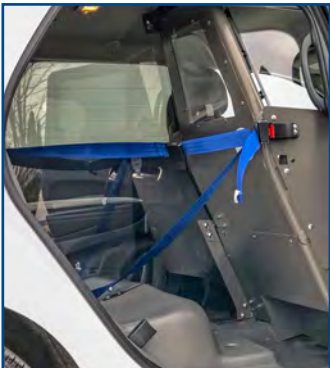
- Single Prisoner Transport
- Driver's seat has full travel and complete recline
- Mount single or dual weapons with a GPC Series Pro-cell Weapon Mount Gun Rack
- Clear, Polycarbonate Divider compartmentalizes the prisoner area
- Provides additional storage space behind the driver's seat

P1000 IS AVAILABLE FOR:

2021 CHEVY TAHOE	2013-2019 DODGE RAM 1500 SSV TRUCK
2015-2020 CHEVY TAHOE PPV	2013-2019 FORD POLICE INTERCEPTOR SEDAN
2019-2021 CHEVY SILVERADO 1500 SSV	2013-2019 FORD POLICE INTERCEPTOR UTILITY
2011-2021 DODGE CHARGER	2020-CURRENT FORD POLICE INTERCEPTOR UTILITY
2018-2021 DODGE DURANGO	2016-2020 FORD F150 SSV TRUCK



P1000 shown in the 2020 Ford Police Interceptor Utility



P1000 shown in the 2018 Dodge Durango

P1300

1/3 CAGE, SINGLE PRISONER TRANSPORT SYSTEM



Custom molded replacement Passenger side door panel. Driver side also available for the P1300.

Our new **P1300** 1/3 Cage provides full usage for two-thirds of the second-row seat while using only one-third for single prisoner transport. This new system provides full travel and recline of the front driver's seat, without compromising the safety necessary for prisoner transport. The single system innovation creates a seamless use for the car during work and after hours.

- Single Prisoner Transport
- Driver's seat has full travel and complete recline
- Mount single or dual weapons with our self-supporting gun racks
- Clear, Polycarbonate Divider compartmentalizes the prisoner area
- Ideal for transporting a car seat or non-detainee passenger
- Only need to store 1/3 OEM Seats
- Transport Seat sits 6" lower than OEM seat
- Includes Custom Molded Passenger Side Replacement Door Panel

P1300 IS ONLY AVAILABLE FOR:

2020 - CURRENT FORD POLICE INTERCEPTOR UTILITY



P1300, 1/3 Cage shown in the 2020 Ford Interceptor Utility



Custom Molded Passenger Side Replacement Door Panel

PRO-CELL PRISONER TRANSPORT SYSTEMS

P1500 SINGLE PRISONER TRANSPORT SYSTEM



The **P1500** offers a higher level of containment than the standard partition by confining the prisoner to only half the back seat of the sedan. The unique half partition with full roll bar design creates additional storage space behind the officer's seat while adding structural integrity to the vehicle.

- Single Prisoner Transport
- Driver's seat has full travel and complete recline
- Half Cage with Full Roll Bar
- Clear, Polycarbonate Divider
- Available for Sedans Only

P1500 IS AVAILABLE FOR:

2011-2021 DODGE CHARGER

2013-2019 FORD POLICE INTERCEPTOR SEDAN



P1500 shown in the Ford Police Interceptor Sedan



P1500 shown in the Dodge Charger

PRO-CELL FEATURES

- ¼" THICK SIDE CURTAIN AIRBAG COMPATIBLE WING PROTECTION
- HEAVY-DUTY STEEL CONSTRUCTION
- DURABLE POWDER COATED FINISH
- ALL NECESSARY EQUIPMENT INCLUDED
- EASY TO CLEAN AND SANITIZE SURFACES

P1826 DUAL PRISONER TRANSPORT SYSTEM



Tri-Lock Vertical Partition Mount
Gun Rack available in P1826 Pro-Cell
Prisoner Containment System

The **P1826** advanced design is the solution to safely transport multiple prisoners: male/female, juvenile/adult, etc. This versatile design compartmentalizes the back seat to accommodate two prisoners providing the officer maximum efficiency and safety.

- Dual Prisoner Transport
- Full Cage with Full Roll Bar
- Mount single weapons with a Horizontal Partition Mount or dual weapons with a Vertical Partition Recessed Mount
- Clear, Polycarbonate Divider
- Divider attaches to partition and seat preventing panel from flexing
- Available for Sedans and SUVs

P1826 IS AVAILABLE FOR:

2021 CHEVY TAHOE

2015-2020 CHEVY TAHOE

2011-2021 DODGE CHARGER

2018-2021 DODGE DURANGO

2013-2019 FORD POLICE INTERCEPTOR UTILITY

2020-CURRENT FORD POLICE INTERCEPTOR UTILITY

2013-2019 FORD POLICE INTERCEPTOR SEDAN



P1826 shown in the 2018 Chevy Tahoe

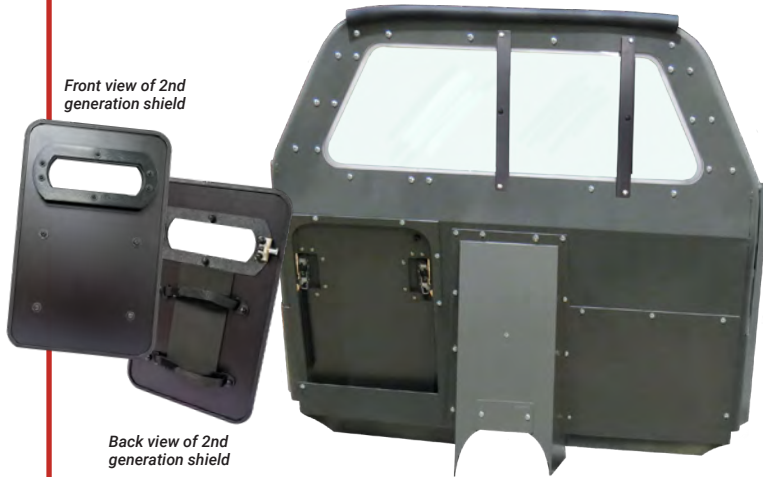


P1826 shown in the 2020 Ford Police Interceptor Utility

PARTITIONS

VIPER™ SHIELD ENHANCED SPACE SAVER PLUS PARTITION

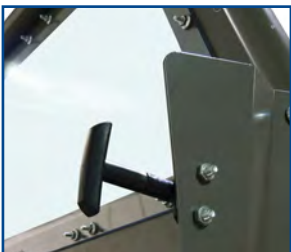
The VIPER™ Shield Rapid Deployment System takes protection outside of the vehicle with the officer. This lightweight shield mounts to our Space Saver Plus Partition and provides portable ballistic protection for officers against the uncertainties they face daily.



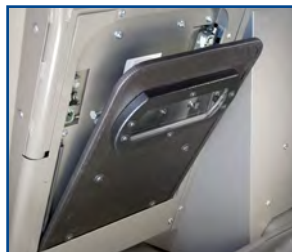
- Shield provides additional protection for exposed vital areas
- 2nd Generation Dyneema® fiber shield is 15x stronger than steel at the same weight and is 2 lbs lighter at 7.5 lbs
- Rated NIJ Level IIIA labeled ballistic panel
- Shield has a transparent, ballistic view port with a flexible, Velcro® handle and armband
- T-handle mounted on B-Pillar behind driver for rapid deployment
- Includes Recessed Panel and a Pair of Lower Extension Panels

AVAILABLE FOR:

2021 CHEVY TAHOE, 2015-2020 CHEVY TAHOE, 2015-2021 CHEVY SUBURBAN, 2011-2020 DODGE CHARGER, 2013-2019 FORD UTILITY INTERCEPTOR, 2020-CURRENT FORD UTILITY INTERCEPTOR



T-handle mount over driver's shoulder



Shield deployed upon releasing T-handle

SPACE SAVER PLUS PARTITION

The Space Saver Plus Partition offers a high level of safety and comfort for the driver while providing increased leg room for the passenger side detainee. It's unique design assists in eliminating obstructions that might otherwise impede officers while loading and unloading prisoners.



- Driver seat maintains full travel
- Provides maximum clearance for loading prisoners and increased legroom during transport
- Same B-Pillar mounting style as our Universal Partitions
- Rubber padded roll bar
- Includes Recessed Panel and a Pair of Lower Extension Panels

AVAILABLE FOR:

2015-2020 CHEVY TAHOE, 2019-2020 SILVERADO SSV, 2015-2020 CHEVY SUBURBAN, 2011-2021 DODGE CHARGER, 2018-2021 DODGE DURANGO, 2013-2019 FORD POLICE INTERCEPTOR SEDAN



Shown in the 2018 Chevy Tahoe



Shown in the 2019 Dodge Durango

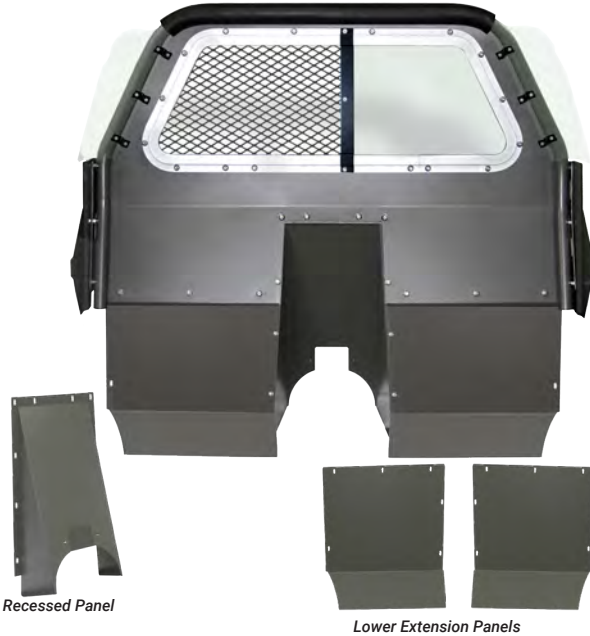
PARTITION WINDOW OPTIONS

- Nine styles to choose from
- Interchangeable with all Pro-gard Partitions
- Ergonomic latches
- Easy to clean



SPACE SAVER PARTITION

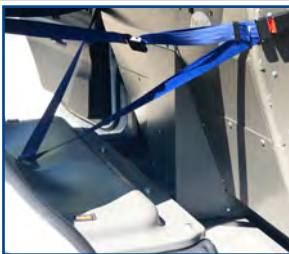
The Space Saver Partition's patented design offers full clearance for loading and unloading prisoners. The recessed panel provides officers additional space for mounting weapons or accessories while the lower extension panels offer ample legroom during transport.



- Provides sufficient clearance for loading prisoners and increased legroom during transport
- Includes Recessed Panel and a Pair of Lower Extension Panels
- Rubber padded roll bar

AVAILABLE FOR:

2021 CHEVY TAHOE, 2015-2020 CHEVY TAHOE, 2019-2020 CHEVY SILVERADO SSV, 2011-2021 DODGE CHARGER, 2013-2021 DODGE RAM SSV, 2013-2019 FORD INTERCEPTOR SEDAN, 2020-CURRENT FORD INTERCEPTOR UTILITY, 2013-2019 FORD INTERCEPTOR UTILITY, 2018-2021 FORD EXPEDITION SSV, 2016-2020 FORD F150 SSV



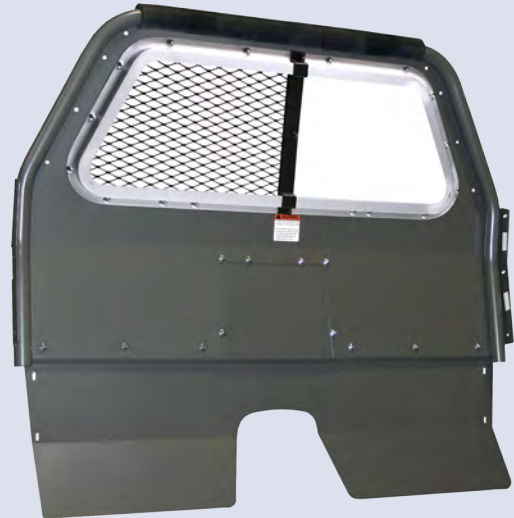
Shown in the 2020 Ford Police Interceptor Utility



Shown in the 2018 Ford Expedition SSV

STANDARD PARTITION

The Standard Partition is engineered to allow full travel and substantial recline of both the driver and passenger seats. This partition's patented design allows officers to safely and securely store weapons, maximize space, maintain visibility and preserve officer safety.



- The unique mounting style maintains the comfort and most functionality of both driver and passenger seats.
- Includes Full-Width Lower Extension Panel for total enclosure of the prisoner transport area
- Rubber padded roll bar
- Compatible with the G4906 & G5000 Series gun racks

AVAILABLE FOR:

2021 CHEVY TAHOE, 2015-2020 CHEVY TAHOE, 2011-2021 DODGE CHARGER, 2013-2021 DODGE RAM SSV, 2013-2019 FORD INTERCEPTOR SEDAN, 2020-CURRENT FORD INTERCEPTOR UTILITY, 2013-2019 FORD INTERCEPTOR UTILITY



Shown in the Dodge Charger



Shown in the 2013-2019 Ford Police Interceptor Utility

PARTITION FEATURES

9 WINDOW CONFIGURATIONS AVAILABLE	OPTIONAL HORIZONTAL OR VERTICAL MOUNT GUN RACK
1/4" THICK AIRBAG COMPATIBLE WINGS	ALUMINUM WINDOW FRAME
HEAVY-DUTY 14 GAUGE STEEL CONSTRUCTION DESIGN	DURABLE POWDER COATED FINISH

Our partitions are the perfect solution for fleets who desire complete prisoner containment, officer safety, and peak comfort. Each partition is thoroughly engineered for maximum strength, durability, security, and ease of installation. They are made of 14 gauge thick steel to withstand aggressive prisoner assaults and are designed for the uncertainties officers face daily, giving them peace of mind.

WINDOW ARMOR AND DOOR PANELS

Our Rear Window Armor and ABS Door Panels are engineered to maximize rear window and rear interior door protection. The Door Panels provide additional security from prisoners by eliminating access to window controls, door latches, and door locks. The Rear Window Armor allows officers high visibility while maintaining prisoner control.

WINDOW ARMOR

- Available for use with OEM door panels & Pro-Gard's ABS Door Panels
- Poly Window Armor features a reinforced steel frame for additional support
- Does not interfere with side curtain airbag deployment
- Designed to provide full rear visibility for the driver
- Sleek product design offers a clean, finished look from both the interior and exterior

ABS DOOR PANELS

- Prevents prisoner access to window controls, door locks, and latches
- Eliminates crevices and cracks of OEM door panels
- ABS Rear Door Panel surfaces resists pathogens
- Door Panel Cover Plates eliminate rear access to the door handle and window controls on the 2020 Ford Interceptor Utility



Polycarbonate with OEM Door Panel



Polycarbonate with ABS Door Panel



Steel Bars with OEM Door Panel



Steel Bars with ABS Door Panel

DOOR PANEL COVER PLATES



Door Panel Cover Plates are only available for the 2020-Current Ford Interceptor Utility

TRANSPORT SEATS AND FLOOR PANS

Our Transport Seats and Floor Pans provide a safer and a more sterile option for officers to transport prisoners. These professionally engineered products feature a smaller profile that fits further back into the rear seat cavity, allowing better control when loading and unloading prisoners.

- Designed specifically to eliminate gaps and crevices where contraband may otherwise be hidden
- Provides detainee more leg room than OEM seats
- High visibility gray finish
- Molded from a single high strength sheet of ABS for durability
- ABS material resists pathogens & bio hazards
- Outboard Seat Belts available



Transport Seat and Floor Pan shown for the 2020+ Ford Police Interceptor Utility



Transport Seat and Floor Pan shown with optional outboard seat belts for the Dodge Charger



Transport Seat with optional Outboard Seat Belts shown in the 2018 Chevy Tahoe

CARGO BARRIERS

Our Cargo Barriers provide law enforcement with an essential barrier between the cargo space and the passenger area of the SUV. Our cargo barrier helps eliminate prisoner access to the cargo area of the vehicle while providing an additional concealed storage area behind the back seat of the SUV.



Cargo Barrier with 7 Gauge Steel Wire screen window shown for the Ford Police Interceptor Utility



Cargo Barrier with Poly window shown for the Chevy Tahoe



Wire Screen Cargo Barrier shown in the Dodge Durango

- Secures cargo area from the passenger compartment
- Extra mounting surface for electronics and other accessories
- Poly Window enclosure maintains security and visibility
- Wire Screen Window maintains open airflow
- Powder coated steel frame
- Utilizes side curtain airbag wings



Wire Screen Cargo Barrier shown in the 2021 Chevy Tahoe



Cargo Barrier shown in the 2020 Ford Interceptor Utility

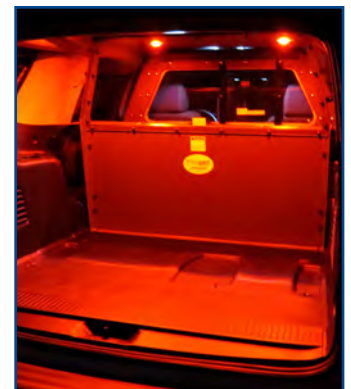
PRISONER TRANSPORT LIGHTING

Prisoner Transport Lighting is engineered to give officers maximum visibility in passenger and cargo areas. Our lightweight, easy to install low-profile LED lighting provides both white lighting for a harsh contrast or ambient red lights that allows eyes to quickly adjust in the dark.

- Low-profile design
- Mounts to the headliner or any flat surface
- Sold in pairs w/15' lead wire & three-way rocker switch with three settings (white, off, red)
- Rubber flange mount included for a finished look when installed
- Minimal .31 amp draw with 250 lumen white output/ 140 lumen red output



Brilliant White Prisoner Transport Lighting shown in a 2018 Chevy Tahoe



Ambient Red Prisoner Transport Lighting shown in a 2018 Chevy Tahoe

TRI-LOCK VERTICAL PARTITION MOUNT GUN RACK

Our patented Tri-Lock Vertical Partition Mount configuration is designed to fit a wide variety of weapons. It can hold one or two long guns and one handgun, this gun rack is engineered for quick and easy access by virtue of its convenient location and offers greater flexibility to accommodate various weapon types and accessories and accessories

- Available for either single or dual long-gun mounting
- Fits our VIPER Shield, Space Saver Plus, and Space Saver Partitions
- Maximum flexibility to accommodate various weapon types and accessories
- Does not require the use of our "Gun Rack Order Form"
- Adjustable brackets, lock heads and butt plates
- Recessed Panel required for installation
- Mounts vertically on Pro-gard Partitions
- Comes with a handgun lock box



Locking Handgun Box

Secures weapons, evidence, and other items conveniently next to the driver's seat

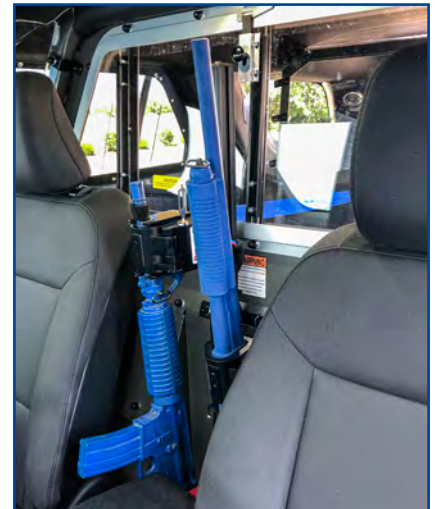
The Tri-Lock Vertical Partition Mount and Universal Partition Mount shown on a Space Saver Plus Partition



Tri-Lock Vertical Partition Mount shown in the 2018 Dodge Durango



Tri-Lock Vertical Partition Mount shown in the 2019 Chevy Silverado



The Tri-Lock Vertical Partition Mount Gun Rack shown in the 2020 Ford Police Interceptor Utility

PRO-CELL VERTICAL PARTITION MOUNT GUN RACK

The GPC Series Gun Rack is engineered for use with a Pro-gard Pro-Cell single Prisoner Transport System. This series can be configured to fit a wide variety of weapons, and mounts up to two long guns vertically on the partition.

- Convenient location - provides quick and easy access to weapons
- Accommodates multiple weapon configurations
- Single or dual long gun mounting
- Mounts vertically to either of our P1000 or P1500 ½ Cage Partitions
- Durable, powder coated, steel construction
- Adjustable brackets and gun locks
- No holes drilled installation



Tri-Lock Pro-Cell mount shown on the P1500



Dual mount shown in the 2013-2019 Ford Police Interceptor Utility



Tri-Lock Pro-Cell Mount Gun Rack shown in the 2020 Ford Police Interceptor Utility



Single Mount shown on the P1000

UNIVERSAL PARTITION MOUNT GUN RACK

The G5000 Series Gun Rack is a single weapon mount which can secure a wide variety of weapons. The Universal Partition mount gun rack typically mounts horizontally to the top of the partition between the window and the roll bar, however it can be mounted on any flat surface.

- Mounts horizontally on Pro-gard Partitions
- Durable, powder coated, steel construction
- Accommodates a variety of weapons
- Mounts on any flat surface
- Available for single weapon mounting



The G5000 Series Gun Rack shown in the 2013-2019 Ford Police Interceptor Utility

TRI-LOCK SELF SUPPORTING GUN RACK

Similar to our Tri-Lock Vertical Partition Mount, the Tri-Lock Self-Supporting Gun Rack safely secures one or two long guns, one handgun and is within easy reach of the officer. It is configured to fit a wide variety of weapons and offers an ideal solution for detectives, supervisors, and other fleet vehicles that do not utilize a partition.

- Mounts vertically in between the driver and passenger seats
- Minimal interference with driver's range of motion
- Mounts to a Self-Supporting base
- Adjustable brackets and lock heads
- Does not require the use of our "Gun Rack Order Form"
- All Tri-Locks come with our Hand Gun Lock Box
- Mounts to OEM locations in most vehicles



Tri-Lock Self Supporting Gun Rack shown in the 2015-2020 Chevy Tahoe



Locking Handgun Box
Secures weapons, evidence, and other items conveniently next to the driver's seat

Shown for the 2020 Ford Police Interceptor Utility

Our gun racks offer multiple mounting options from vertical to horizontal. Each gun rack comes equipped with an 8 second timer and momentary switch to allow for immediate access to the weapon. We offer three types of key overrides for our gun locks; Straight, Vending, or Handcuff key.

GUN RACK FEATURES
SINGLE OR DUAL VERTICAL WEAPON MOUNTING
BLACK POWDER COATED FINISH
MOMENTARY SWITCH AND 8-SECOND TIMER
ADJUSTABLE TO MEET EACH WEAPON'S SPECIFICATIONS
STRAIGHT, VENDING, OR HANDCUFF GUN LOCK OVERRIDE KEYS



Tri-Lock Self Supporting Gun Rack shown in the 2019 Chevy Silverado

TRUNK MOUNT GUN RACK

Our GTM Series Trunk Mount Gun Rack is available for single weapon mounting in the vehicle's trunk and can be customized to match most weapons. The mount utilizes the existing OEM frame of the sedan's trunk for an easy installation and is perfect for supervisors, detectives, or other fleet vehicles where a partition is not installed.



Trunk Mount Gun Rack shown in the Ford Police Interceptor Sedan

- Designed to fit the specific purpose of each vehicle
- Custom fit to eliminate rattle
- Single weapon mounting
- Simple "Gun Rack Order Form" completion will allow us to build each rack to your specifications
- Currently available for the Dodge Charger and Ford Police Interceptor Sedan



SPECIALTY MOUNT GUN RACKS

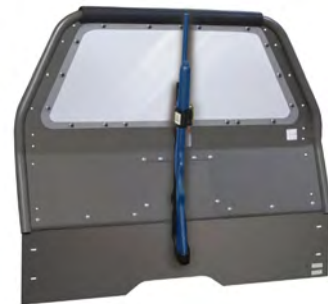
MOTORCYCLE MOUNT

The GMM Series offers an AR single weapon mounting solution for motorcycle patrol units. Our Motorcycle Mount provides officers the ability to carry a 27.5" long weapon and offers the added security of our locking gun racks.



SINGLE VERTICAL MOUNT

The G4906 Series is a single weapon vertical partition mount which can secure a wide selection of weapons. It's narrow design allows for multiple gun racks to be mounted side-by-side.



Gun Locks are determined by a combination of mounting locations, weapon type, and weapon accessories. In order to secure the best fitment, we build the gun rack around each specific weapon.

Choose from three styles of key override: Straight, Handcuff or Vending.

TRUNK AND CARGO AREA ORGANIZERS

Pro-gard's Trunk and Cargo Area Organizers are aptly designed for most law enforcement vehicles. The heavy-duty organizers fit seamlessly into the contours of the spare tire well of sedan models or in the cargo area of an SUV. The lightweight ABS construction is extremely durable, allows for easy access to contents, and provides maximum protection while the vehicle is in motion.



D3805 under our Cargo Security Cover in the 2018 Dodge Durango

- Vehicle specific design
- Lightweight ABS construction
- Removable dividers allow officers to personalize their organizers
- Hinged lids allow for easy access
- Heat & cold resistant providing maximum protection

TRUNK ORGANIZER DIMENSIONS			
D3805	28"	10.5"	18"
D3825L	45"	11"	30"



D3825L



SEAT ORGANIZERS

Our Seat Organizers create the perfect solution for storing small essential duty gear or files that can be easily reached from the driver seat. This portable design is ideal for officers driving pool cars by allowing them to easily remove their organizer from the vehicle before the next shift.

- Portable design allows the organizer to move from car to desk to home
- Attaches to almost any flat surface
- Three Available Styles: Multi Slotted, Portable Printer and Open Slotted
- Pliable steel straps easily adjust to fit any OEM seat
- Lightweight durable ABS construction
- Welded construction - strengthens seams against constant movement and friction
- The D2951 comes with Velcro® straps



Seat Organizer shown in the Ford Police Interceptor Utility



D2951

D3000

D2950

TRUNK AND ELECTRONIC TRAYS

Trunk Trays offer both a storage platform as well as an electronics mounting surface that retracts into the trunk. This durable, easily operated product is the solution for keeping loose equipment secure and wires free from entanglement.

- Suspended mounting
- Multiple mounting points on mounting brackets for location flexibility
- Tray clearance varies by vehicle offering maximum storage
- Glide Track with full extended length ball bearing slides
- Durable, black powder coated steel resists corrosion
- Latches keep the tray firmly locked
- No Holes Drilled for easy install
- Available for the Dodge Charger and Ford Police Interceptor Sedan
- 150 lb capacity



Trunk Tray shown on the Ford Police Interceptor Sedan

CARGO SECURITY COVER

Safely stow away a wide range of equipment in the cargo area of the SUV. This unique SUV security solution is easy to install and will hinder theft by keeping items out of sight, essentially creating a trunk in the rear of the SUV. The steel construction provides additional mounting surfaces for accessories, weapons, electronics, and duty gear.



Cargo Security Cover shown in the 2019 Dodge Durango

- Safely conceals equipment, gun racks, tools, electronics, and officer gear
- Additional mounting space for weapon racks and gear
- Available for use with or without our Cargo Barrier
- Multiple slits for securing items down with bungee cords
- 14 gauge steel construction design
- Heavy-duty rubber mat extending the full width of the vehicle's cargo area



Stand-alone Cargo Security Cover shown for the 2020 Ford Police Interceptor Utility

CLEARANCE SPACE BENEATH CARGO SECURITY COVER			
VEHICLE	DEPTH	HEIGHT	WIDTH
2021 CHEVY TAHOE	45"	18.75"	47.5"
2018-2020 CHEVY TAHOE	45"	20"	48"
2020+ FORD PIU	44.5"	19.5"	40.5"
2013-2019 FORD PIU	40"	16.5"	41"
2019 DODGE DURANGO	40"	16.5"	41"

WEAPON AND STORAGE DRAWERS

With SUVs gaining in popularity as patrol vehicles, they lack the ability to conceal weapons in a manner that the trunk of a sedan offers. Our locking Weapon and Storage Drawers offer the perfect solution. These innovative and durable products are designed to help segment the cargo area, creating manageable spaces to store duty gear and equipment.

- Drawers both mount with or without our Cargo Barrier
- OEM rear visibility is maintained
- Mounting brackets provide clearance space underneath

ALUMINUM STORAGE DRAWER

- Comes with a push button lock release/handle combo for one-handed access

WOOD WEAPON STORAGE DRAWER

- Protects weapons from moisture, sunlight, and regular wear and tear
- Features a programmable lock and two lever latches
- Can accommodate weapons up to 38.5" long in a Ford PIU and 42" long in a Chevy Tahoe



Wood Weapon Storage Drawer shown in the 2021 Chevy Tahoe

Aluminum Storage Drawer shown in the 2013-2019 Ford Police Interceptor Utility



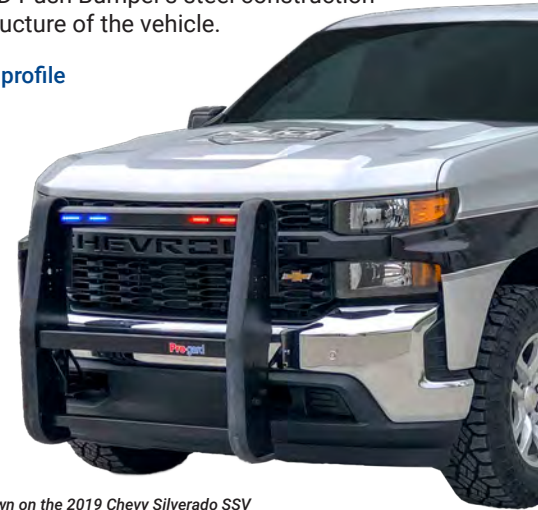
ALUMINUM STORAGE AND WOOD WEAPON STORAGE DRAWER DIMENSIONS

VEHICLE	D	H	W	CLEARANCE
2013-2019 FORD PIU	18"	11"	44.5"	12.25"
2020-CURRENT FORD PIU	20.125"	11"	42.5"	7.5"
2018-2020 CHEVY TAHOE	23"	11.5"	47"	12.75"
2021 CHEVY TAHOE	23"	11.5"	47"	12.25"

HD PUSH BUMPERS

Our HD Push Bumpers are engineered to offer law enforcement the best solution when it comes to officer and vehicle protection. Uniquely designed for each vehicle make and model for maximum coverage, durability and visibility, the HD Push Bumper's steel construction allows officers to move stranded vehicles to safety without fear of compromising the bumper structure of the vehicle.

- Sized to fit the vehicle - available for sedans, trucks and SUVs in sizes matching each grill profile
- Fits the contours of the vehicle providing complete coverage and visibility
- Welded, rugged steel construction
- Auxiliary light mounting platform - various mounting slots provide multiple options for mounting warning lights
- Integrated mounting design - will not interfere with the SRS airbag system
- Sturdy rubber padding covers surface area encasing bumper edge providing maximum protection
- No Holes Drilled installation utilizes existing OEM holes and slots for quicker installation (excluding Dodge Durango)
- Choose from All Red/White, All Blue/White, or Half Red/White Half Blue/White Integrated Whelen ION LEDs



HD Push Bumper shown on the 2019 Chevy Silverado SSV



HD Push Bumper shown on the 2019 Ford F150

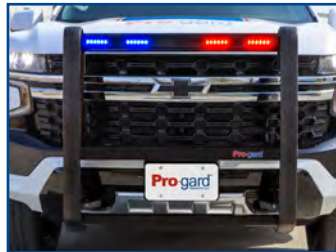
INTEGRATED LED LIGHT OPTIONS
INTEGRATED, WHELEN® ION™ DUO™ SMOKED LENS LED LIGHT-BARS
SEDAN FEATURES 2 ION LIGHTS
SUV CHOOSE EITHER 2 OR 4 ION LIGHTS
WIDE VARIETY OF LIGHT COLOR OPTIONS
WIRE COVERS TO ENCLOSE WIRING



HD Push Bumper on the 2020 Ford Police Interceptor Utility



HD Push Bumper on the 2019 Ford Expedition



HD Push Bumper on the 2021 Chevy Tahoe



HD Push Bumper on the 2015 Dodge Charger

COMMAND GRILLE®

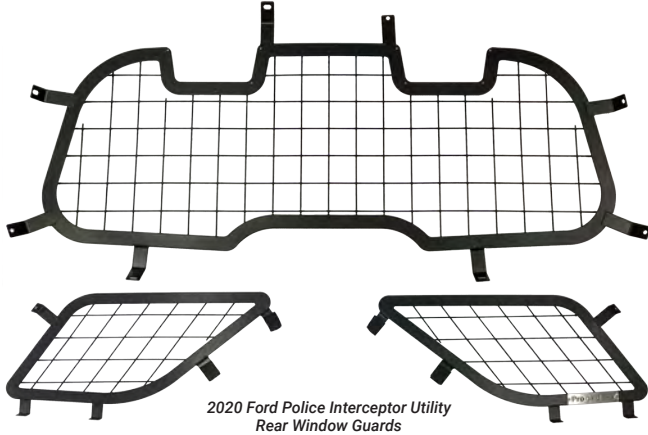
Our Command Grille® is engineered to provide First Responders with a simple alternative lighting solution when situations call for additional exterior lighting. It is designed specifically for the 2020 - Current Ford Police Interceptor Utility and provides full intersection coverage when agencies have a "No Push Policy".

- Low profile contoured design
- Made of high impact black UV resistant ABS
- Integrated mounting design, does not interfere with OEM's visibility
- Easy installation - no need to remove front fascia
- Mounts to factory grille with two supplied brackets and hardware
- Available with or without lights
- Four lights on front bar and one on each side (Six total, three red & three blue)
- Available with Whelen ION T-series lights or SoundOff Signal mPower series lights
- Dimensions: 37.44" W x 10.5" H x 5.7" D



REAR WINDOW GUARDS

Our Rear Window Guards become the perfect theft deterrents to the cargo area of an SUV by creating an additional layer of protection to the vehicle while enhancing officer safety.



Rear Window Guards shown on the 2018 Chevy Tahoe

- 3 Piece Window Guard Set
- Provides Maximum Visibility
- Prevents break-ins due to the highly visible cargo area
- Fits Ford's Police Interceptor Utility with or without the Ford "Ready for the Road Rear Lighting Package"
- Installs underneath window trim

- Lightweight construction will not wear out the actuators of the rear hatch
- Steel frame construction with black powder coated finish
- Durable, 1/8" Wire Screen with 2" spacing that won't hinder driver's rear window visibility

BALLISTIC DOOR PANELS

The NIJ Level IIIA Ballistic Door Panels offer maximum coverage to give officers added protection from open fire while in their vehicles. Our expert design optimizes the coverage area for each unique make and model. The weatherproof panels feature vehicle specific designs that are made for both driver and passenger side doors.



Ballistic Door Panels illustrated on the 2020 Ford Police Interceptor Utility

- Kevlar® Ballistic Door Panels add less overall weight to vehicle
- Humidity and weather resistant
- No interference with window operation
- Bolt-in design requires no vehicle modifications
- Independently tested to meet NIJ standards
- Level IIIA panels protect against bullets up to a 44 Magnum as well as all threat types listed in IIA, and II NIJ Testing Level Specifications



SKID PLATES

Our Skid Plates are engineered to prevent costly damages to a vehicle's undercarriage. They offer maximum protection from the daily grind of high-speed pursuits, cutting through rough terrain or pushing stranded vehicles off of medians.

- Provides an added layer of protection underneath the vehicle that is otherwise exposed
- Easily access to routine maintenance locations
- No Holes Drilled utilizes existing OEM mounting points
- Powder coated steel construction
- Transmission skid plate available for the 2020 Ford Interceptor Utility

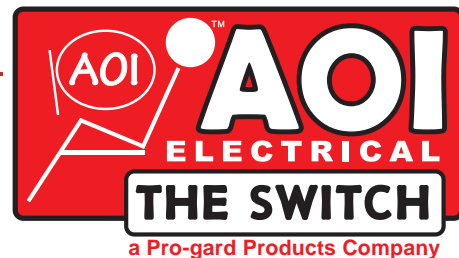


Skid Plate for the 2020 Ford Police Interceptor Utility

Skid Plate for the 2020 Ford Police Interceptor Utility

AOI ELECTRICAL AIR BAG CONTROL SWITCHES

Our patented AOI Electrical Front Passenger, Driver, and Side Curtain Airbag On/Off Control Switches provide officers the solution to perform without the threat of damage to themselves or vehicles when their airbag is deployed. The side curtain switch protects after-market mounted equipment and allows the use of rigid thick wing partition filler panels. Each switch is tested to meet all federal requirements.



FRONT PASSENGER ON/OFF SWITCH

- Key operated switches deactivate airbags on the passenger side dash
- Key can be left on, to protect passenger
- NHTSA allows vehicles used in emergency situations to install frontal airbag deactivation switches
- Most municipal insurance plans compensate for airbag deactivation switches
- Smaller remote status lights are available when the airbag switch is mounted in a location that is not visible to the driver
- Eliminates encounters between airbags and after-market equipment mounted in airbag's deployment zone



SIDE CURTAIN ON/OFF SWITCH

- High visibility, LED light indicating if airbag protection is turned on or not
- Small profile box fits easily under the dash or in other confined spaces
- Key operated switches can be turned off to protect equipment mounted in the airbag deployment zone or turned on to protect a passenger seated in the passenger seat behind the airbag
- NHTSA allows vehicles used in emergency situations to install frontal airbag deactivation switches
- Light is on if the airbag is turned off



SAFESTOP® VEHICLE ANTI-THEFT SYSTEM

Pro-gard's SAFESTOP® Vehicle Anti-theft System protects your fleet and officers with the turn of a key. Our product's **"Always On Protection"** component prevents vehicle theft and provides weapons, electronics and expensive duty gear 24/7 protection.

- Vehicle protection is engaged once key is removed
- With key removed, the shifter is locked in park
- Gun Lock Secure feature prevents the theft of weapons stored in an electronic gun rack
- Trunk Lock Secure prevents access to trunk and contents
- Vehicle maintains complete functionality of most electronic operations without leaving the vehicle vulnerable to theft
- Low profile housing fits below the dash
- Brake Pedal Override kills the engine
- Minimal amp draw

24/7 ALWAYS ON PROTECTION
BRAKE KILL OVERRIDE
TRUNK LOCK SECURE
GUN LOCK SECURE
SHIFT LOCK OUT

The Safestop Anti-theft System allows the vehicle to remain running even after the ignition key is removed; with the ignition key removed, the shifter is locked. This function can only be overridden when the ignition key is reinserted.

THE KEY IS THE KEY



Toggle Switch



Trunk Lock Secure



Gun Lock Secure

SAFESTOP®
A Pro-gard Products Company



A SAFER, MORE RELIABLE WAY TO GET INSTANT RESULTS.

DTK™ Drug Test Kits provide a safe and instant solution for law enforcement, government and other organizations that deal with the demanding and vigorous challenges of fighting illicit drug crimes.

EASY TO USE

Simple five step process to immediate results.

LONG SHELF LIFE

With a lifespan of two years, the Identifier™ can sit unused and ready for testing for long periods of time.

SELF-CONTAINED

Closed system is safe to use with no direct contact with substances required.

COMPACT SIZE

At under 3 inches (73mm), it's small enough to fit into just about any pocket.

RUGGED PLASTIC CASING

Maximum protection from accidental breakage and sealed tight to protect from possible contamination.

EXTREME TEMPERATURE OPERATION

From freezing to triple digits, this kit can remain accurate and withstand extreme environmental changes.

TEST ON ANY SURFACE

The bristled applicator can pick up trace substances from any surface including skin, solids and liquids.

BUILT-IN NEUTRALIZER

The system is safe to dispose of after use thanks to a built-in neutralizer.

Effective on a wide range of substances



Pills, Tablets & Capsules



Organic Materials



Liquids



Powders & Crystals



DTK3001 IDENTIFIER™



TP1001

Both kits, The Identifier™ and TP1001 Drug Test Kit require zero direct physical contact with suspect substances. With the sampler protected from any possible contamination, this patented technology combines advanced chemistry and state-of-the-art ergonomics to offer the most reliable and accurate test kits available.



9650 East 148th Street | Noblesville, IN 46060

Phone 800.480.6680 | Fax 317.579.6681

pro-gard.com