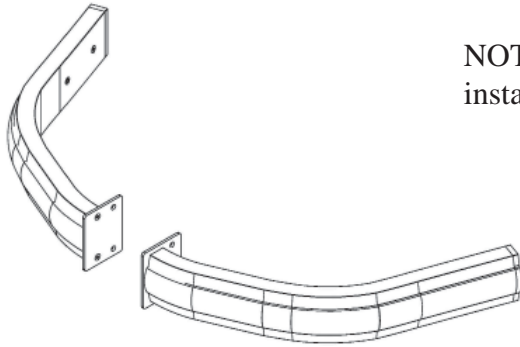


INSTALLATION GUIDE
2016- CURRENT CHARGER
PUSH BUMPER WRAPS
4PBFW56C15

Pro-gard[™]
PRODUCTS LLC.

STRONG | RELIABLE | SECURE

THESE COMPONENTS ARE REQUIRED
TO INSTALL THE PUSH BUMPER WRAPS



Push Bumper Wrap Assemblies
Part # 3PBW5616-00

NOTE: The Pro-gard HD Push Bumper is required for the installation of the push bumper wraps.



Part # 4PBFW56C15-KIT

I. The following tools will be required to complete the installation.

- | | | |
|-------------------------|------------------|--------------------|
| A. 7/16 Socket | D. 3/4 Socket | G. 1/2 Socket |
| B. 18mm Socket | E. T-15 Torx Bit | H. 5/16 Drill Bit |
| C. Phillips Screwdriver | F. T-50 Torx Bit | I. 1-1/2" Hole Saw |

II. Read all instructions carefully and refer to the last page BOM to ensure all parts were received. *The push bumper wraps should be installed after the push bumper. Refer to the push bumper kit for instructions.*

III. Remove Push Bumper and Fascia

- A. Remove push bumper and brackets necessary to remove fascia.
- B. Remove vehicle's front fascia to expose bumper beam. (See Fig. 1)

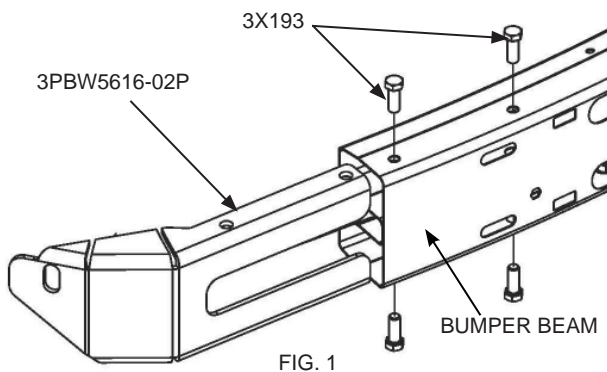


FIG. 1

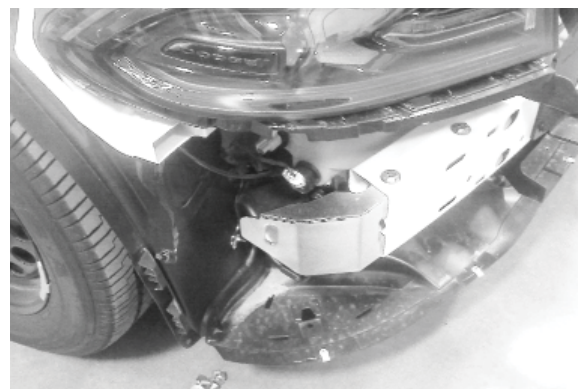


FIG. 2

IV. Insert and Fasten Wrap Support Brackets

- A. Insert the 3PBW5616-02P wrap support bracket into the ends of the bumper beam. (Fig. 1 & 2)
- B. Attach the wrap support bracket using the provided 3X193 bolts through the OEM hole locations as shown in (Fig. 1 & 2).
- C. Repeat on the driver side.

V. Modify Fascia

- A. Use the template on the back of the instructions to mark and cut the hole in the fascia in order to install the outer support brackets.
- B. Reinstall the fascia leaving the fender liners loose to allow access for outer bracket assembly.
- C. Re-mount the push bumper.

VI. Assemble Outer Bracketry

- A. Align the 3PBW5616-03 standoff with the slot on the 3PBW5616-02P brackets through the hole in the fascia and the center hole on the 3PBW1200 hat channel bracket (Fig. 3).
- B. Fasten the parts together using the provided 3X244 bolt, 3X508 washers and 3X165 nut as shown (Fig. 3) by accessing the bracket underneath and through the fender liner.
- C. Repeat on the driver side.

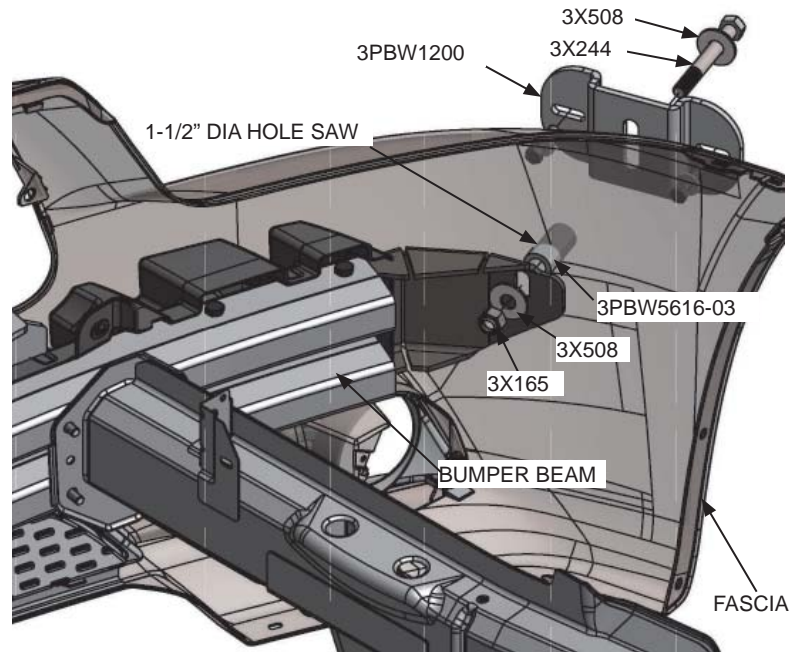


FIG. 3 - VIEW INSIDE FASCIA

VII. Install Wrap Assemblies

- A. Support push bumper. Disassemble outer mounting bolts at push bumper and keep the washers and nuts (Fig. 4). It may be necessary to have someone assist you with aligning the parts.
- B. Assemble wrap mounting and backer plate 3PBW1202 to push bumper hole locations as shown (Fig. 4).
- C. Reassemble using longer 1-1/2" bolts 3X212 provided in kit and re-using the washers and nuts (Fig. 4).

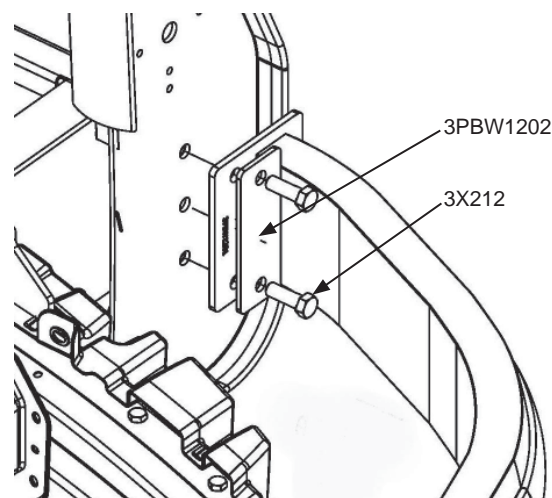


FIG. 4

VIII. Fasten Wrap to Outer Bracket

- A. Orient the 3PBW1200 hat channel brackets as shown (Fig. 5), in order to line up the two slots with the threaded rivet nuts in the push bumper wraps.
- B. Fasten the brackets to the push bumper wraps using the provided 3X119 bolts and the 3X13 washers.
- C. Adjust the overall installation for fit and function of all components. Once satisfied, insure all fasteners are tight.

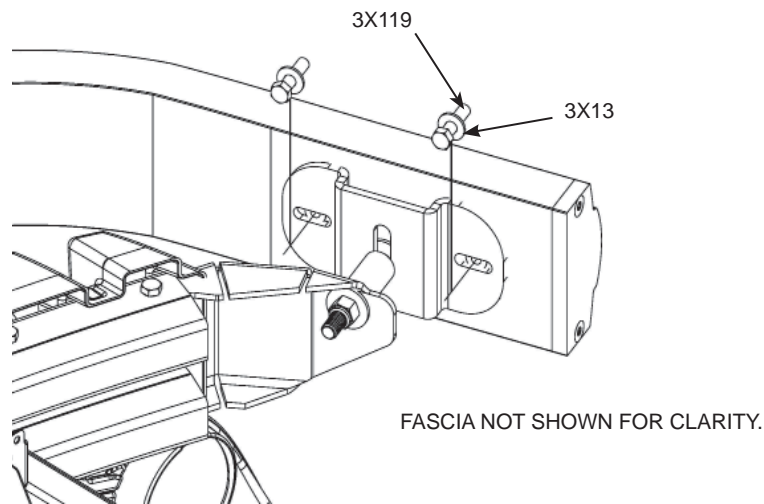
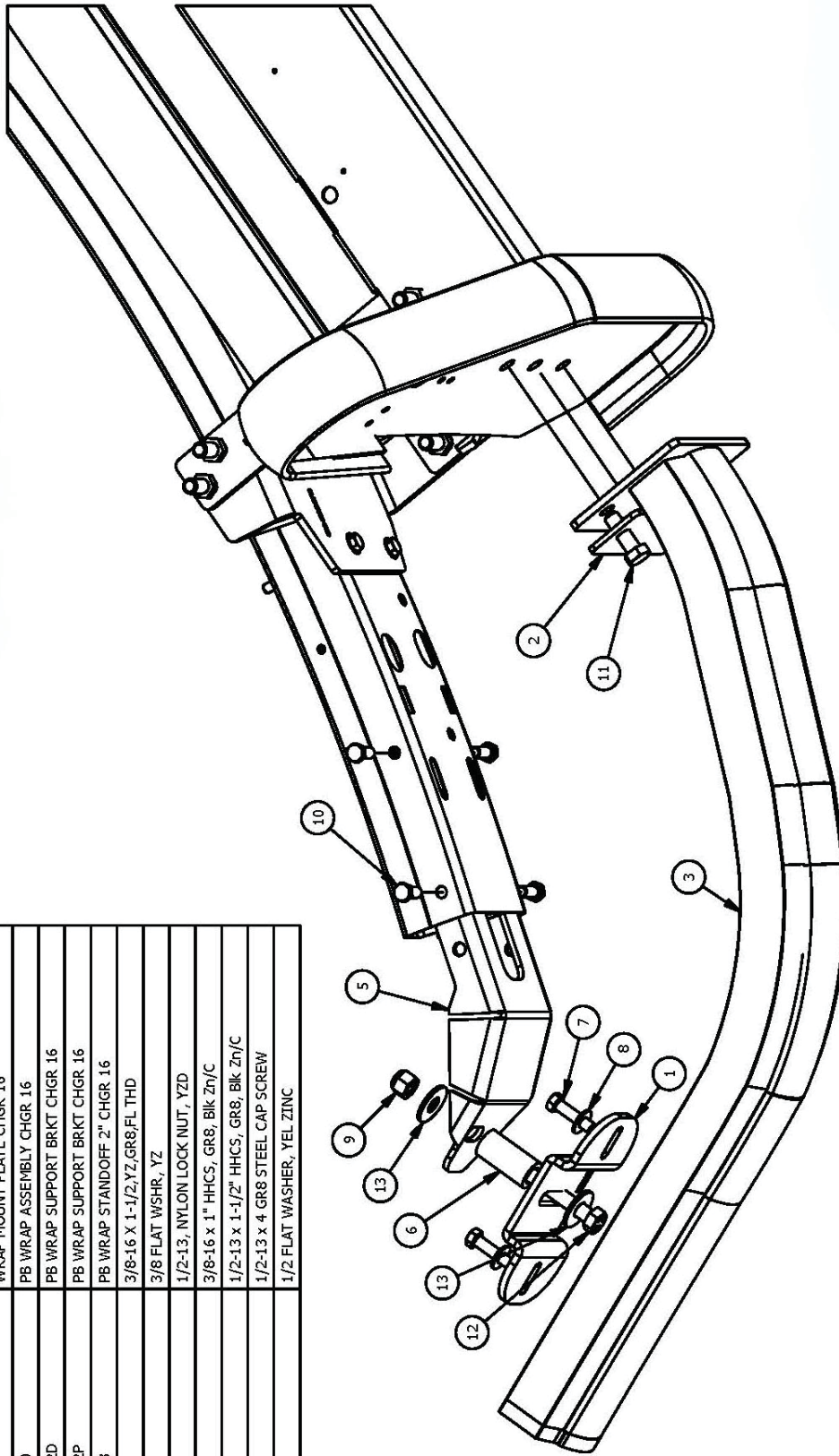


FIG. 5

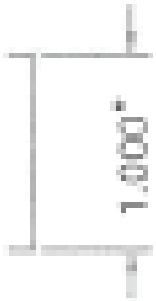
Installation complete!

If you have any problems with this installation then call the toll free number (800-480-6680) and ask for technical assistance.

PARTS LIST			
ITEM	QTY	PART NUMBER	DESCRIPTION
1	2	3PBW1200	PB WRAP BEAM HAT BRKT
2	2	3PBW1202	WRAP MOUNT PLATE CHGR 16
3	2	3PBW5616-00	PB WRAP ASSEMBLY CHGR 16
4	1	3PBW5616-02D	PB WRAP SUPPORT BRKT CHGR 16
5	1	3PBW5616-02P	PB WRAP SUPPORT BRKT CHGR 16
6	2	3PBW5616-03	PB WRAP STANDOFF 2" CHGR 16
7	4	3X119	3/8-16 X 1-1/2,YZ,GR8,FL THD
8	4	3X13	3/8 FLAT WSHR, YZ
9	2	3X165	1/2-13, NYLON LOCK NUT, YZD
10	8	3X193	3/8-16 x 1" HHCS, GR8, Blk Zn/C
11	4	3X212	1/2-13 x 1-1/2" HHCS, GR8, Blk Zn/C
12	2	3X244	1/2-13 x 4 GR8 STEEL CAP SCREW
13	4	3X508	1/2 FLAT WASHER, YEL ZINC



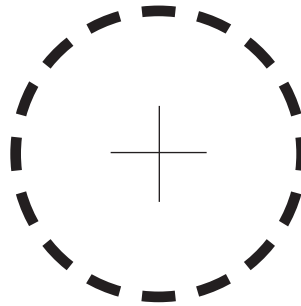
TOP



CHECK SCALE

SELECT "NONE" FOR PAGE
SCALING WHEN PRINTING
FROM .pdf FILE

LINE UP THE TEMPLATE WITH THE
CORRESPONDING EDGES OF THE
FASCIA



CUT A 1-1/2" HOLE ALONG
THE DASHED LINE

SIDE MARKER LAMP

EDGE OF FENDER

TOP



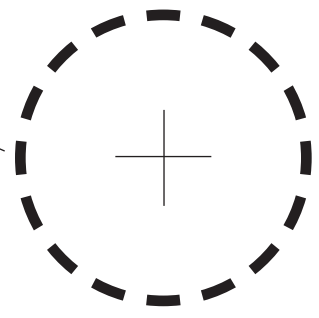
LINE UP THE TEMPLATE WITH THE CORRESPONDING EDGES OF THE FASCIA

SELECT "NONE" FOR PAGE SCALING WHEN PRINTING FROM .pdf FILE

CHECK SCALE

1:1000"

pro-gard.com
800.480.6680



CUT A 1-1/2" HOLE ALONG THE DASHED LINE

2016 - CURRENT DODGE CHARGER PASSENGER SIDE TEMPLATE